



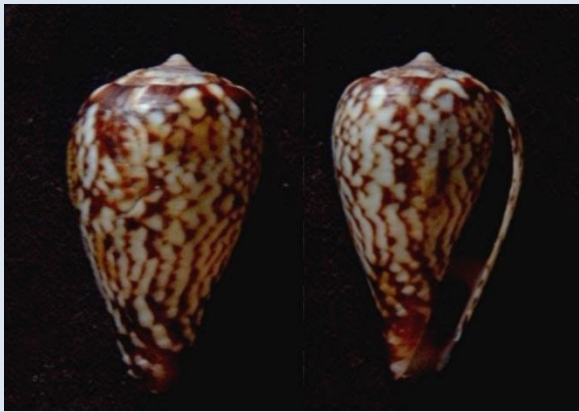
Collecting at Meva



Meva is situated to the south of Limagens and just to the north of Santa Maria. In Rolán & Röckel 2001, the distribution list of species combines Meva, Santa Maria and Canoco.

However the specimens found at Meva are quite unique in their colour forms. In fact, it is uncommon to find specimens which are typical of the nominative form of their species.

Conus nobrei Trovão, 1975



Meva *C. nobrei* 16mm



C. nobrei Icon f4

This specimen at 16mm is normal size for *C. nobrei* and seems nearest to a specimen with a similar pattern which is illustrated in Iconography of W African Conidae.

Conus aff. musivus



C. alexandrinus/musivus with its pattern of rows of chevrons sometimes forming axial streaks and some smaller dots in rows below the middle.



Meva 16mm CS

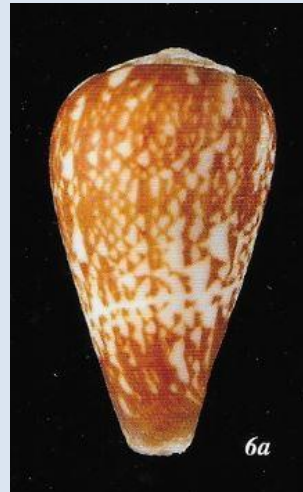


Meva 25mm CS

The 16mm specimen has elements typical of *C. musivus* in its pattern; however the 25mm has developed thin wavy axial lines as part of its pattern:- a feature more common in *C. naranajus* or *C. tenuilineatus*.



C. aff musivus Meva 20mm CS



alexandrinus/musivus
Icon

This 20mm specimen has a globular shape but is similar in pattern to a much narrower specimen illustrated in the Iconography of West African Conidae.



C. aff. musivus Meva 17/19mm



C. aff musivus 26mm CS

The juvenile specimens 17/19mm show the development of the wavy axial lines: the larger 26mm specimen has many pattern elements of *C. alexandrinus* but a narrow profile as found in *C. tenuilineatus*.

***Conus bulbus* Reeve, 1843**



Meva 17mm CS

Meva 23mm CS

The 17mm specimen has the profile and some typical pattern elements of *C. bulbus* plus the chevrons found in *C. alexandrinus*. The 23mm specimen would be interpreted as *C. bulbus*.

***Conus zebroides* Kiener, 1848**



Meva 32/24mm

Meva_25mm GM

These specimens have the pattern of *C. zebroides* but the ground colour of *C. trovaii*. Whilst some periostracum may be still attached, the bluish green ground colour and the purple aperture are not typical of *C. zebroides*. The 25mm specimen shows a thin spiral line often found in specimens of *C. trovaii*.



Meva 20mm CS

Specimens similar to this form of *C. zebroides* with a darker brown tone are illustrated in RR2000 from Sao Nicolau and Chapeu Armand.

***Conus albuquerquei* Trovao, 1978**



Meva 16mm CS

Meva 18mm

The 16mm specimen shows the shape and pattern of *C. albuquerquei*, but the large axial flammules in the 18mm specimen are unusual.

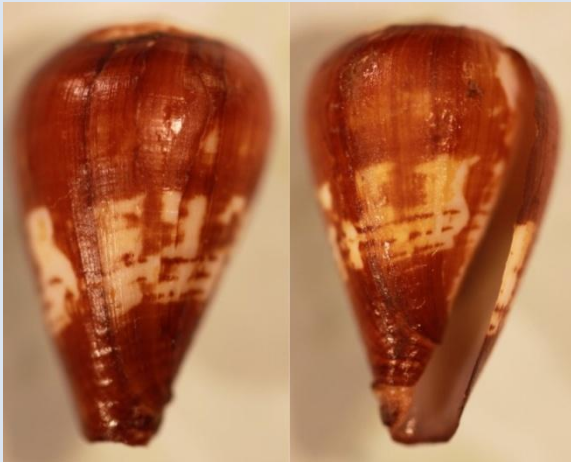
***Conus lineopunctatus* Kaicher, 1977**



Meva 25mm CS

A specimen with a non typical pattern and shape.

Conus aff africanus



Meva 22mm CS



Meva 22mm CS



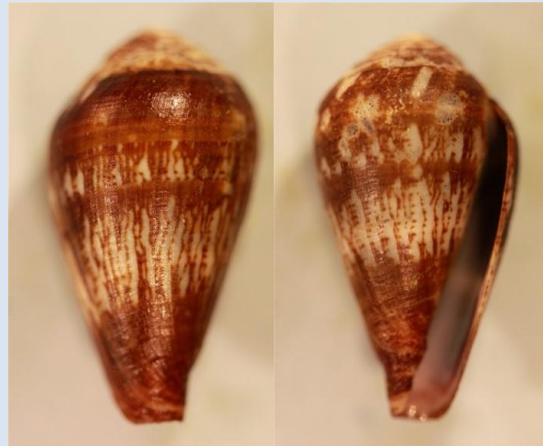
Meva 27mm

These specimens are all different but share many of the elements of the pattern of *C. africanus*. However, they have a purple aperture with a broad white band, not found in *C. africanus*.

Conus variegatus Kiener, 1848



Meva 30mm CS



Meva 23mm CS

Many forms of *C. variegatus* are found at Meva which are atypical. The 30mm specimen has a wide profile at the shoulder. The 23mm specimen has many thin axial lines which are unusual for the species.

Conus species

So many of the specimens collected at Meva are non typical forms of species and it is difficult to relate them to any recognised species.



Meva 22mm CS



Meva 20mm CS



Meva 20mm CS



Meva 16mm CS



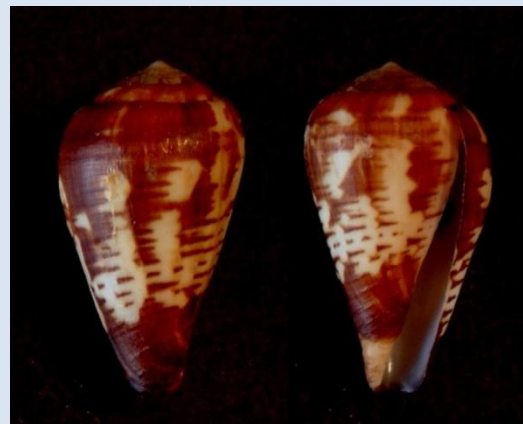
Meva 20mm CS



Meva 23mm CS

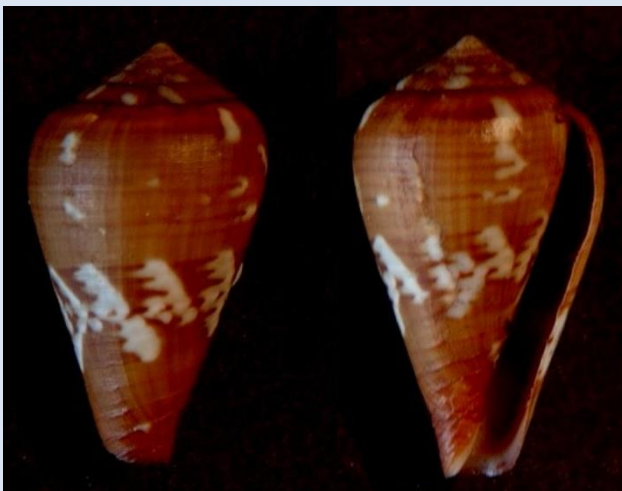


Meva 23mm CS



Meva 22mm CS

The 22mm specimen has some affinity to *C. aff. africanus* from the populations around Baia Farta/Azul, much further north.

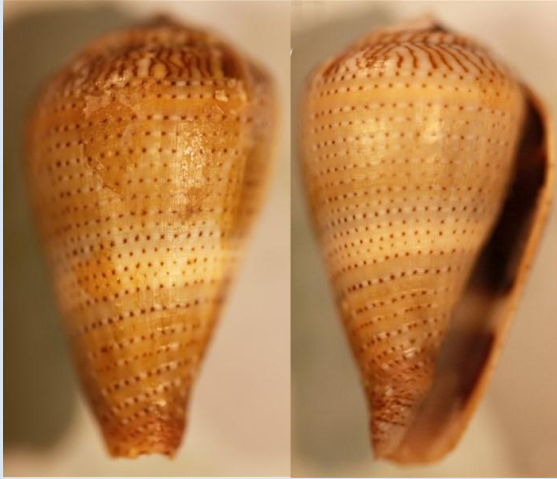


Meva 19mm CS



Meva 19-23mm CS

The 19mm specimen has some traits of *C. franciscoi* but has a strongly purple aperture and a pattern of darker brown spiral lines .



Meva 26mm CS

A specimen similar to *C. equiminaensis* but the spire pattern has the thin axial lines as found on *C. micropunctatus*.

Page last updated 4 June 2019.

