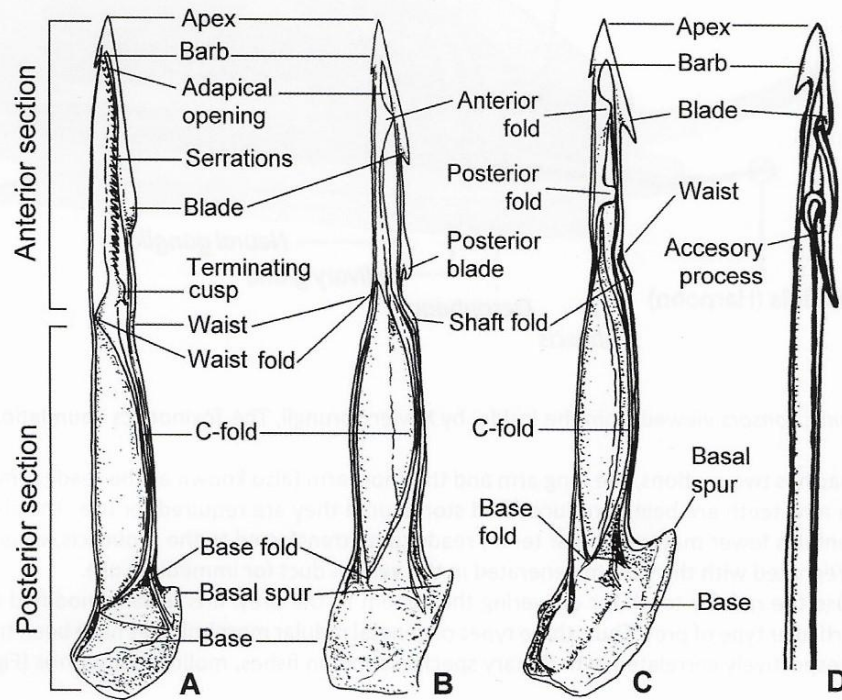




## Angolan Cone Radulae

- Radular features



D Number of denticles in serration

DR/PA Total length of radula tooth/apical portion

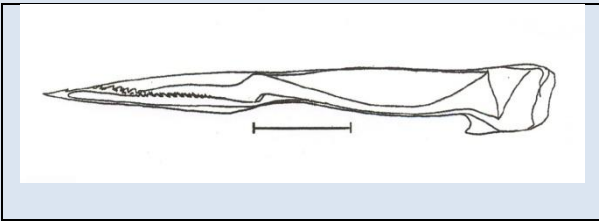
F Blade of radula tooth

L Shell length

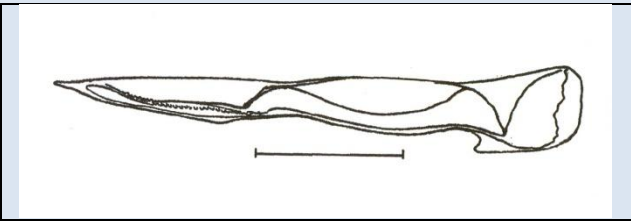
LC/DR Length of shell/length of radula tooth

ND Number of teeth in the radula

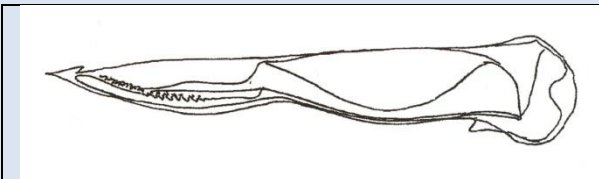
%PA Extension of apical portion covered by the blade of radula tooth (F) ( $100 * F / PA$ )



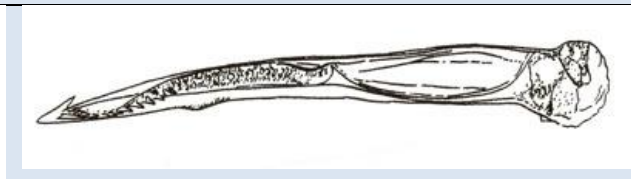
aemulus



africanus



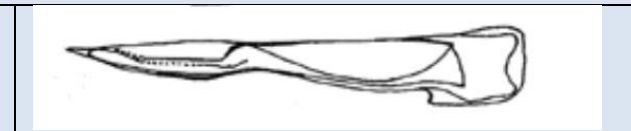
albuquerquei



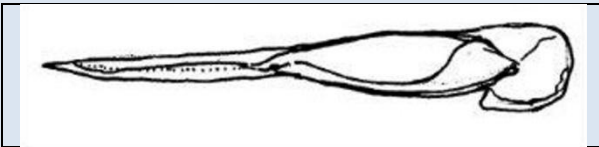
alexandrinus/musivus



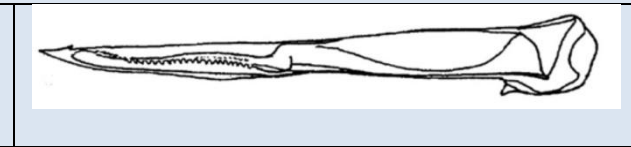
allaryi



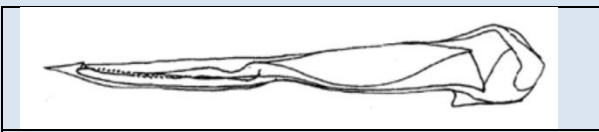
anabelae



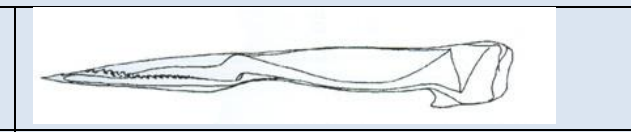
annegretae



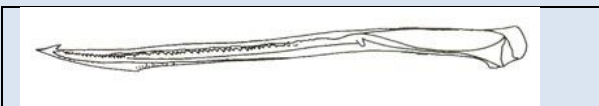
babaensis



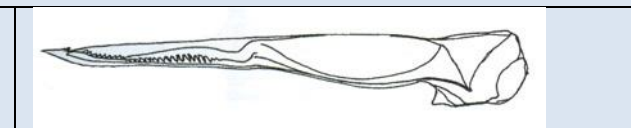
bocagei



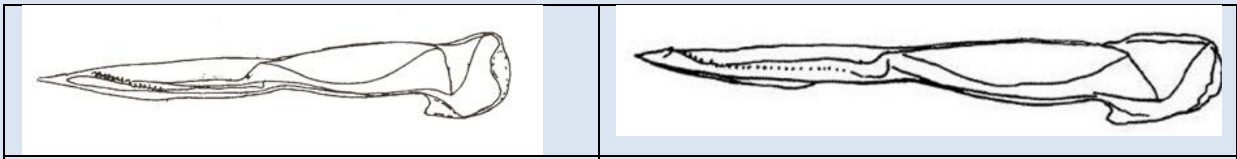
bulbus



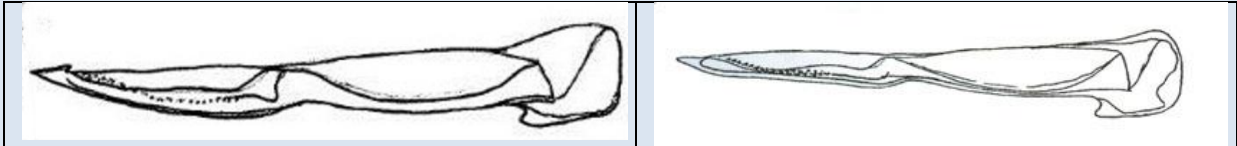
carnalis



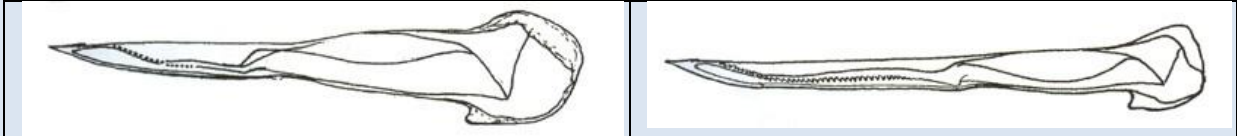
cepasi



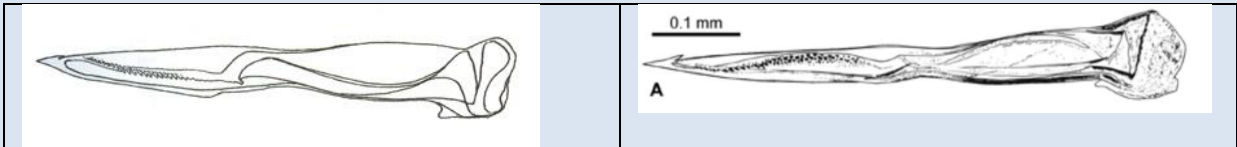
chytreus	equiminaensis
----------	---------------



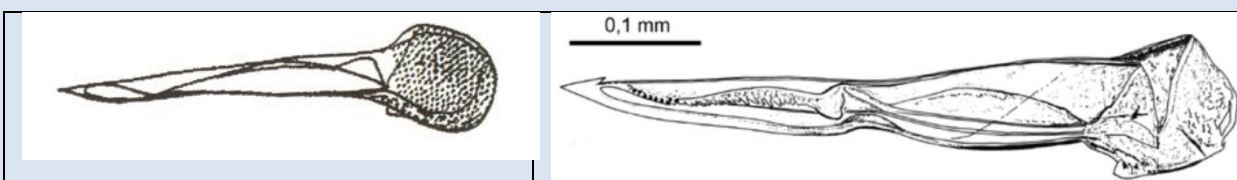
eusebioi	filmeri
----------	---------



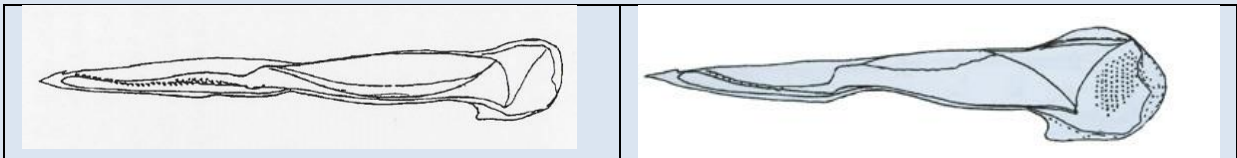
flavusalbus	franciscoi
-------------	------------



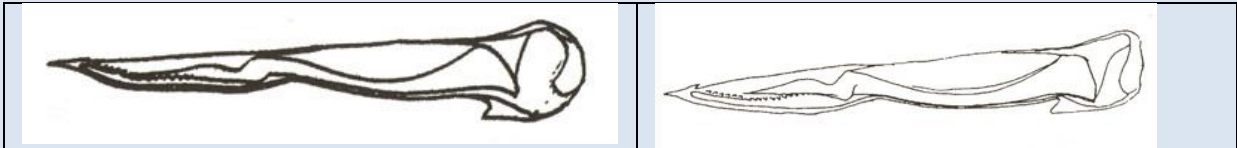
fuscolineatus	inesae
---------------	--------



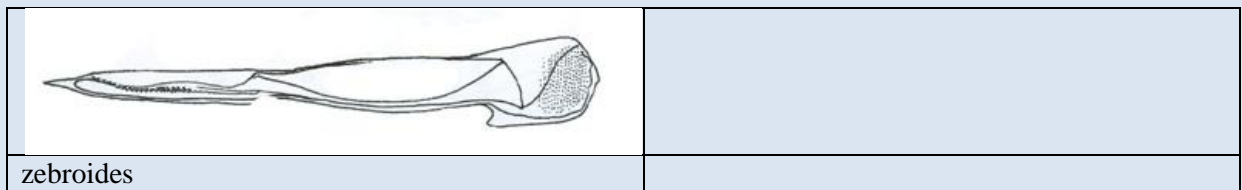
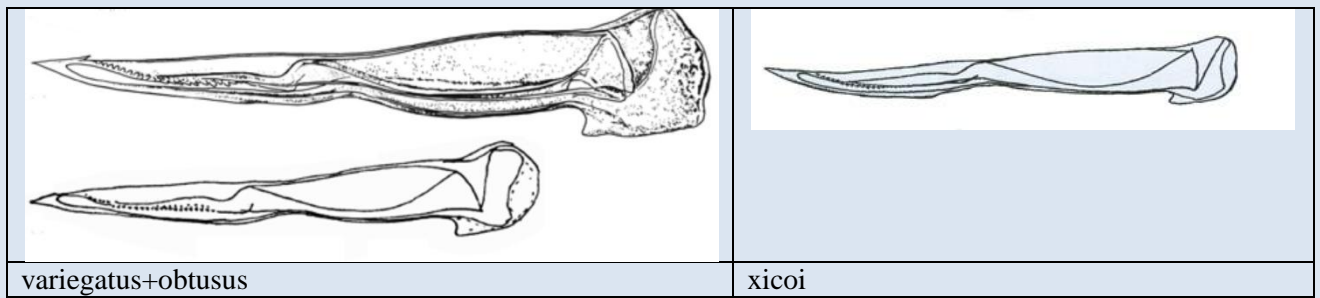
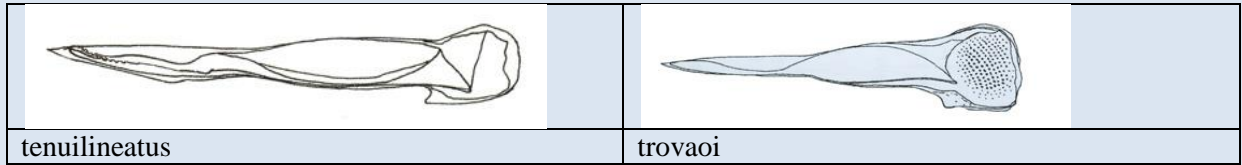
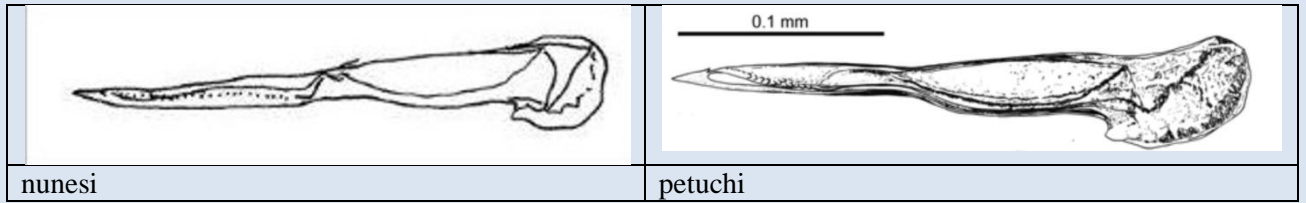
lineopunctatus	medvedevi
----------------	-----------



micropunctatus	naranjus
----------------	----------



negroides/gabrielae	nobrei
---------------------	--------



\*\*\*\*\*